

HARTMANN



Skin Care Catalogue

2023



MoliCare®

MoliCare®

Protection. Every day.




HARTMANN has been providing healthcare products for over 200 years. We take a holistic approach to healthcare, placing emphasis on the tangible benefits for patients and those who care for them, aiming to enhance their well-being.



The MoliCare Skin Difference

MoliCare Skin is a complete solution for cleansing, protecting, and caring for compromised skin and designed to help prevent skin irritation.

MoliCare Skin protects and maintains skin health across all ages.

-  pH balanced formula⁷
-  Gentle and non-irritating, suitable for sensitive skin
-  Neutralises odours⁸



Active Skin Protection
Preserves the acid protection mantle of the skin which helps to prevent skin irritations.



Dermatologically tested
Hypoallergenic, reducing the risk of allergic reactions and rashes.

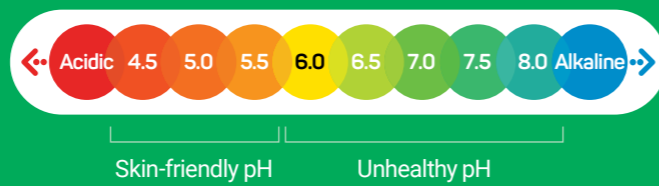


Nutriskin Protection Complex⁹
A composition of four ingredients with amino acids, sweet almond oil, essential unsaturated fatty acids and creatine which strengthen the barrier function of the skin.

Importance of Healthy Skin

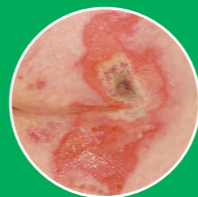
The skin is the largest organ in the human body and plays a vital role in protecting it from external factors. The skin's surface is covered by a delicate acidic film known as the acid protection mantle, which is formed by secretions that shield against harmful environmental factors and bacteria. Maintaining a slightly acidic pH within the range of 4.5 to 5.5 is essential for promoting and preserving skin health (skin integrity).

Various factors, such as ageing and exposure to irritants, moisture, incontinence, pressure, or friction, can weaken the skin and make it more susceptible to damage.



This can lead to a range of skin conditions, including skin tears, Incontinence Associated Dermatitis (IAD), and the associated incidence of pressure injuries (PI). It is essential to maintain skin integrity to prevent these conditions.

Skin Injury Prevalence



Photos from The Ghent Global IAD Categorisation Tool (GLOBIAD), 2017.¹

	Skin Tears	IAD	Pressure Injuries
Aged Care	Up to 50.5% ²	Up to 35% ⁴	Up to 10.3% ⁴
Acute Setting	Up to 8.9% ³	Up to 42% ⁴	Up to 20% ⁴
Hospital Acquired	Up to 5.5% ³	Up to 23% ⁴	Up to 20% ⁴

Prevention

IAD, pressure injuries, and skin tears present significant challenges for patients, causing pain, discomfort, and reduced mobility.

Prevention and management strategies are crucial for improving patient outcomes and reducing healthcare costs.

Adhering to a structured skin care regimen can significantly decrease the incidence of skin tears⁵ and prevent the onset of IAD and PIs⁶.

Skin care is important in preventing skin injuries and enhancing a person's quality of life.



1. Beeckman D et al. 2017. The Ghent Global IAD Categorisation Tool (GLOBIAD). Skin Integrity Research Group - Ghent University, 2017. <http://www.UCVVgent.be>. 2. Rayner R et al. 2017. Developing a prevention and management plan for incontinence-associated dermatitis: a best practice approach. Wound Practice and Research. 3. Miles, SJ et al. 2022. Skin tear prevalence in an Australian acute care hospital: A 10-year analysis. Int Wound J. doi:10.1111/iwj.13735. 4. Barakat-Johnson M et al. 2020. A clinical guide to pelvic skin assessment. Wounds International. 5. Carville K et al. 2014. The effectiveness of a twice-daily skin moisturising regimen for reducing the incidence of skin tears. Int Wound J 11:446-453. 6. Gray et al. 2012. Incontinence-Associated Dermatitis: A comprehensive Review and Update. JWOCN. 39(1):61-74. 7. Except MoliCare® Skin Body Lotion & Protection Foam. 8. Except MoliCare® Skin Most Skin Care Tissues, Impregnated Wash Gloves & Protection Foam. 9. Available in MoliCare® Skin Body Lotion, Barrier Cream, & Protection Foam.

The MoliCare Skintegrity System

MoliCare offers a comprehensive approach to incontinence management by combining MoliCare Skin products with MoliCare absorbent products. This combination, known as the MoliCare Skintegrity System, helps to maintain a healthy skin pH balance and help prevent the occurrence of Incontinence Associated Dermatitis (IAD).

MoliCare Skin products work in conjunction with MoliCare absorbent products¹ to maintain the acid protection mantle and provide a skin-neutral pH balance.

Our goal is to provide innovative solutions that improve the management of incontinence, allowing individuals to live with greater comfort and dignity.



Best Practice to Maintain Healthy Skin

Following a structured skin care regimen that includes regular skin inspections, gentle cleansing, moisturising, and the use of skin protectants has been shown to reduce the occurrence of Incontinence Associated Dermatitis (IAD) and the associated incidence of pressure injuries.²⁻⁴ Furthermore, moisturising the skin twice daily has been clinically proven to reduce the occurrence of skin tears by 50%.⁵

 Regularly incorporating MoliCare Skin into a structured skin care regimen may enhance overall skin health and decrease the likelihood of skin damage occurring over time.




1 Clean

Gently cleanse the skin with a cleanser that is pH balanced and replaces moisture to support healthy skin. Avoid rubbing the skin to prevent skin damage.



2 Protect

Apply a pH balanced skin protectant to shield against irritants and provide skin with moisture and nutrients. Always treat the skin gently and avoid friction.

 Using skin care products incorrectly can impact absorbency of continence pads. Therefore, it is essential to use a range of products that are specifically designed to work in conjunction with continence pads, such as MoliCare Skin.



3 Care

Care for the skin by applying a topical product that can help restore the acid protection mantle, provide long-lasting moisture, and add lipids to improve skin strength and elasticity.

1. Except MoliCare® Premium Men Pad 3 Drops, MoliCare® Skin Body Lotion, MoliCare® Hand Cream, MoliCare® Protection Foam. 2. Park KH, Kim KS. 2014. Effect of a structured skin care regimen on patients with fecal incontinence: a comparison cohort study. J Wound Ostomy Continence Nurs. 2014 Mar-Apr;41(2):161-7. doi: 10.1097/WON.000000000000005. 3. Langemo D, Hanson D, Hunter S, Thompson P, Oh IE. Incontinence and incontinence-associated dermatitis. Adv Skin Wound Care. 4. Bliss et al. 2007. An economic evaluation of four skin damage prevention regimens in nursing home residents with incontinence: economics of skin damage prevention. J Wound Ostomy Continence Nurs. 2007;34(2): 143-152. 5. Carville K et al. 2014. The effectiveness of a twice-daily skin moisturising regimen for reducing the incidence of skin tears. Int Wound J 11:446-453.

Gentle and thorough pH-balanced skin cleansers to help maintain the skin's barrier function and prevent skin irritation.



No rinse products (cleansing without water)

A no-rinse cleanser may reduce the incidence of incontinence associated pressure injuries when compared with soap and water.*



Cleansing Foam

Quick and gentle cleansing for the perineal area, for urinary and faecal incontinence.

- ✓ Contains creatine to support the skin's own natural protection layer.
- ✓ Odour-neutralising with pleasant scent.
- ✓ Gently and effectively removes faeces.

Moist Skin Care Tissues

Extra large and extra soft, gentle cleansing wipes for the perineal area and the entire body.

- ✓ Impregnated with cleansing lotion.
- ✓ Convenient and time-saving.
- ✓ Contains chamomile extract to soothe irritated skin.
- ✓ Free of allergens, mild, alcohol-free formula.

Impregnated Wash Gloves

Easy, gentle and hygienic all-over body cleansing.

- ✓ Nourishing and moisturising with Aloe Vera and panthenol.
- ✓ Alcohol free.
- ✓ Option to use warmed or cooled.

Product	Code	Size	Units Per Pack	Pack Per Carton
MoliCare Skin Cleansing Foam	995016	400 mL	1	12
MoliCare Skin Moist Skin Care Tissues	995038	20 x 30 cm	50 pcs	12
MoliCare Skin Impregnated Wash Gloves	995056	17.5 x 12 cm	8 pcs	24

* Hodgkinson B et al. 2007. A systematic review of topical skin care in aged care facilities. J Clin Nurs.



Cleansing products with water



Shampoo

Mild cleansing shampoo for hair and sensitive scalps.

- ✓ Long lasting effect so hair does not need daily washing.
- ✓ Contains nourishing panthenol and almond oil to nourish and hydrate the skin.
- ✓ Odour-neutralising.

Wash Lotion

A gentle wash lotion for all-over body use.

- ✓ Suitable for sensitive and irritated skin.
- ✓ Contains nourishing panthenol and almond oil to nourish and hydrate the skin.
- ✓ Odour-neutralising with a refreshing scent.
- ✓ Can be used in bowl or in the shower.

Product	Code	Size	Units Per Pack	Pack Per Carton
MoliCare Skin Shampoo	995017	500 mL	1	12
MoliCare Skin Wash Lotion	995014	500 mL	1	12
MoliCare Skin Wash Lotion (Sachet)	995047	10 mL	1	100

^ Fletcher J, Beeckman D, Boyles A et al. 2020. International Best Practice Recommendations: Prevention and management of moisture-associated skin damage (MASD). Wounds International.

MoliCare® Skin Protect

Supports regeneration of the acid protection mantle and enhances the skin's own barrier function to help prevent skin irritation.



Barrier Cream

An effective transparent barrier on the skin to protect it from moisture and irritants, such as urine and faeces, and for an easier skin assessment.

Suitable for daily skin protection.

- ✓ Soothes, moisturises and protects irritated skin while supporting the hydration of the skin and regeneration of the acid protection mantle.
- ✓ Suitable for sensitive and irritated skin.
- ✓ Zinc oxide free - avoids blocking or clogging incontinence absorbent products.

Protection Foam

Forms a transparent film while conditioning and allowing the skin to breathe.

A small amount of foam is sufficient to cover a larger section of the perineal area.

- ✓ Helps to recover irritated skin and regenerate damaged skin.
- ✓ Suitable for sensitive and irritated skin.

Product	Code	Size	Units Per Pack	Pack Per Carton
MoliCare Skin Barrier Cream	995086	200 mL	1	12
MoliCare Skin Barrier Cream (Sachet)	995051	10 mL	1	100
MoliCare Skin Protection Foam	995087	100 mL	1	12

Haesler, E. 2018. Skin care to reduce the risk of pressure injuries. Wound Practice & Research: Journal of the Australian Wound Management Association, 26(2), 111-113.

Only in MoliCare® Skin Barrier Cream

MoliCare® Skin Care

Provides intensive moisture to strengthen and maintain skin integrity, helps restore the acid protection mantle, and improve skin strength and elasticity.



Body Lotion

Long-lasting intensive moisturiser for all over body use. Prevents further drying of the skin.

- ✓ Contains Nutriskin® Protection Complex for strengthening the skin's barrier and regeneration function.
- ✓ Suitable for sensitive and irritated skin.
- ✓ Moisturising water-in-oil emulsion which supplies essential oils immediately to the skin.

Hand Cream

Intensive care for very dry, chapped hands.

- ✓ Contains nourishing panthenol, almond oil, and creatine to smooth, soften and repair dry skin.
- ✓ Water-in-oil emulsion which supplies essential oils immediately to the skin.

Product	Code	Size	Units Per Pack	Pack Per Carton
MoliCare Skin Body Lotion	995019	500 mL	1	12
MoliCare Skin Body Lotion (Sachet)	995048	10 mL	1	100
MoliCare Skin Hand Cream	995020	200 mL	1	12

*Carville K et al. 2014. The effectiveness of a twice-daily skin moisturising regimen for reducing the incidence of skin tears. Int Wound J 11:446-453.

Only in MoliCare® Skin Body Lotion



Helps. Cares. Protects.

For further information please contact
your HARTMANN representative,
or call HARTMANN customer care
toll free 1800 805 839

molicare.au

PAUL HARTMANN Pty Ltd. ABN 35 000 099 589.
Level 5, 1 Thomas Holt Drive
Macquarie Park NSW 2113.

PO Box 943 North Ryde BC NSW 1670
© Registered trademark PAUL HARTMANN AG.

9166569_062023